



Atlantis®

Convenience, efficiency and predictability


Atlantis® cement-retained solutions

 **Dentsply
Sirona**
Implants

Stay creative, stay in control

Atlantis cement-retained solutions are developed to match the way you work, from ordering through design to the final solutions – keeping you in control from the start. Ordering a patient-specific Atlantis solutions from Dentsply Sirona gives you total design and application control of each component before the milling process.

Atlantis cement-retained solutions promote a streamlined, outsourcing workflow for all major implant systems¹ that eliminates the need for investing in or maintaining additional equipment or software, giving you the time to focus on what really matters most – function and esthetics.



“It’s a great comfort for us to know that we will get the abutment and the crown at the same time and in the same package from Atlantis. Then we do not have to worry about having to mill the crown when we get the abutment. This is especially of value in our peak seasons.”

Jan Rosberg, CDT
Mosebacke Dental KB
Stockholm, Sweden



Cement-retained solutions - the complete package

Atlantis® Abutment

A uniquely designed patient-specific abutment. Available in biocompatible materials including titanium, gold-shaded titanium and zirconia. Margins are ideally designed and placed for easy and safe removal of excess cement. With every zirconia abutment you receive an Atlantis Insertion Guide to ensure accurate orientation and installation. For all other Atlantis Abutment cases the Atlantis Insertion Guide can be requested with your order.



Abutment



Insertion guide

Atlantis® Crown, Cut-back and Full-contour

The crowns are designed from the final tooth shape and manufactured in a controlled environment alongside the patient-specific abutment. The Atlantis Crown, Cut-back features customized parameters for determining the thickness of porcelain veneering, and the Atlantis Crown, Full-contour is available with or without a polished surface to suit your staining preferences.



Cut-back crown



Full-contour crown

Atlantis® Crown File and Core File

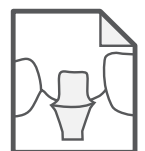
The crown file is a patient-specific digital file of the Cut-back or the Full-contour crown design. Designed in the patented Virtual Atlantis Design (VAD) proprietary design software, the file is uploaded to Atlantis WebOrder. The dental technician downloads and imports the file into the milling software and mills the crown in the preferred crown material. As an alternative, an Atlantis Core File can be ordered together with the Atlantis Abutment, for crown production in the dental laboratory. Atlantis Core File (a digital file of the total case, including the outer surface of the Atlantis Abutment) is easy to import into the design software.



Cut-back crown file



Full-contour crown file



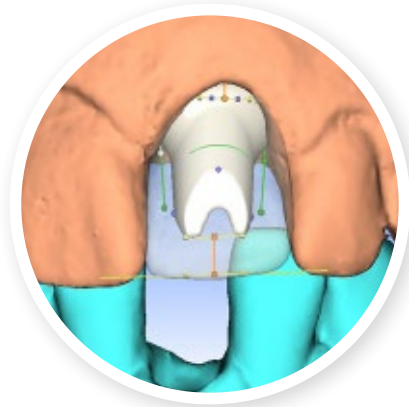
Core file

Streamline your workflow



Atlantis® WebOrder

Easily order an Atlantis Abutment with an abutment screw, Atlantis Crown and Atlantis Insertion Guide. Built-in features allow you to adjust porcelain cut-back values and abutment parameters.



Virtual Atlantis® Design (VAD)

The proprietary design software takes the edentulous space, surrounding teeth and soft tissue anatomy into consideration. This enables you to design patient-specific solutions that replicate natural tooth function and esthetics.



Atlantis® Editor

Unique, advanced software enables you to modify the Atlantis Abutment and Atlantis Crown well in advance of the milling process.



The complete set

Receive an Atlantis Crown together with the corresponding Atlantis Abutment with an abutment screw and an Atlantis Insertion Guide (mandatory for zirconia abutments and optional for titanium abutments).



Finalizing the crown

The Atlantis Crown features customized parameters for determining the thickness of porcelain veneering, and the Atlantis Crown, Full-contour is available with or without a polished surface, giving you the opportunity to finalize the final esthetics.



Intraoral cementation

Once the Atlantis Abutment is in place and the appropriate torque is applied, the Atlantis Crown can be cemented onto the abutment.

Atlantis® Crown, Cut-back

Crown shoulder
For improved porcelain support at the margin

Unfinished veneering surface
For direct application of porcelain

Consistent cement space
Supports a reliable cementation process

Cut-back range
From 0.5-2.0 mm on all sides

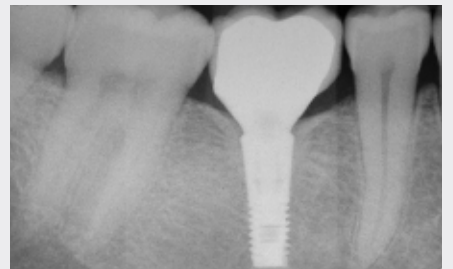
Anatomical shape, support and esthetic color: a 6-year follow-up



The healing abutment was removed after 6 weeks and a final impression of the implant position and the shape of the soft tissue was sent together with the opposing model to the dental laboratory.



The subgingival portion of the abutment is designed with an anatomical shape which supports the surrounding soft tissue.



After 6 years, a radiograph shows a precise fit of the restoration. Spaces are created for the inter-proximal papillae, and the position of the bone is at the level of the implant.



After 6 years, the adjustment of the soft tissue around the restoration fills the space for the inter-proximal papillae and contributes to a natural position of the soft tissue contour.

Courtesy of Fernando Rojas-Vizcaya, DDS, MS and Francisco Ortega, CDT

Freedom to choose

- Atlantis Abutment and Atlantis Crown are indicated for all positions in the mouth.
- Atlantis Abutment comes in different emergence width options to help achieve optimal function and esthetics.
- Atlantis Crowns are available in 12 different translucent shades of zirconia and 1 white zirconia, to resemble the Vita shade guide.
- Open digital workflow, providing the greatest flexibility for your restorative implant needs with a ready-to-mill digital crown file or core file for designing the crown in preferred software.

Atlantis Abutment is compatible with an extensive range of implant connections, giving you the opportunity to work with your preferred implant system¹.



We've got you covered

By choosing Atlantis, you can be assured that the prosthetic solutions you receive are of the highest quality, safety and reliability. This is why Atlantis patient-specific prosthetic solutions come with an exclusive and industry-leading comprehensive warranty program. If an implant supplier does not honor its warranty due to your use of Atlantis abutments, Dentsply Sirona will cover both the abutment, the crown and the implant².



1. Refer to the Atlantis abutments implant compatibility chart.
2. Subject to the terms and conditions of the Atlantis abutments warranty.
All trademarks, company names and implant designs are the property of their respective owners.

About Dentsply Sirona Implants

Dentsply Sirona Implants offers comprehensive solutions for all phases of implant therapy, including Ankylos®, Astra Tech Implant System® and Xive® implant lines, digital technologies, such as Atlantis® patient-specific solutions and Simplant® guided surgery, Symbios® regenerative solutions, and professional and business development programs, such as STEPPS™. Dentsply Sirona Implants creates value for dental professionals and allows for predictable and lasting implant treatment outcomes, resulting in enhanced quality of life for patients.

About Dentsply Sirona

Dentsply Sirona is the world's largest manufacturer of professional dental products and technologies, with a 130-year history of innovation and service to the dental industry and patients worldwide. Dentsply Sirona develops, manufactures, and markets a comprehensive solutions offering including dental and oral health products as well as other consumable medical devices under a strong portfolio of world class brands. As The Dental Solutions Company™, Dentsply Sirona's products provide innovative, high-quality and effective solutions to advance patient care and deliver better, safer and faster dentistry. Dentsply Sirona's global headquarters is located in York, Pennsylvania, and the international headquarters is based in Salzburg, Austria. The company's shares are listed in the United States on NASDAQ under the symbol XRAY.

Visit www.dentsplysirona.com for more information about Dentsply Sirona and its products.