

# RELEASE THE POWER OF 3D

## Step into digital dentistry

As Carestream Dental's most successful 3D unit, the CS 8100 3D is now available with an optional cephalometric imaging module. A multi-functional, 4-in-1 imaging solution, the new CS 8100SC 3D blends award-winning 2D panoramic technology, powerful CBCT imaging, and 3D model scanning with the world's fastest cephalometric scanning capabilities. In turn, you gain access to the tools you need to build your practice through a single imaging system that covers virtually all of your everyday imaging needs.



### ULTRA-COMPACT DESIGN

*Slim and elegant, the CS 8100SC 3D fits practically anywhere. At just 1.8 m wide, the unit is one of the smallest cephalometric units and features an open design that is built for comfort.*



### MULTI-FUNCTIONAL SYSTEM

*In addition to diagnostic imaging, the CS 8100SC 3D allows you to obtain precise digital 3D models for optional applications, including orthodontics, implant planning or CAD/CAM restorations.*

*"The future of orthodontics is in-house, and the CS 8100SC 3D is a vital component of the in-house orthodontics workflow!"*

**DR. KLAUS-DIETER GERKHARDT,  
ORTHODONTIST,  
WORMS, GERMANY**

# ONE SYSTEM. THREE TECHNOLOGIES. MORE POSSIBILITIES.

Whether you practice general dentistry, orthodontics, or manage a multi-specialty practice, the CS 8100SC 3D is amazingly versatile and gives you the ability to perform more procedures in your own practice. From two-dimensional panoramic and cephalometric exams to 3D imaging, the system covers an array of routine examinations, as well as advanced procedures.

Along with its many imaging capabilities, the CS 8100SC 3D delivers precise, high-resolution images with each and every use—making it an ideal choice for most practices. In simple terms, there's just no better way to make the move to 3D.

## AWARD-WINNING 2D TECHNOLOGY

*The CS 8100SC 3D delivers outstanding panoramic and cephalometric images for routine diagnostic needs.*

## LOW-DOSE IMAGING

*Use the low-dose mode to obtain high-quality 3D images at the same or lower dose as a standard panoramic exam.*

## WORLD'S FASTEST CEPHALOMETRIC SCANNING

*Scan images in as little as 3 seconds\* and reduce the risk of motion blur, all while reducing exposure time.*

## EXCLUSIVE AUTOMATIC TRACING

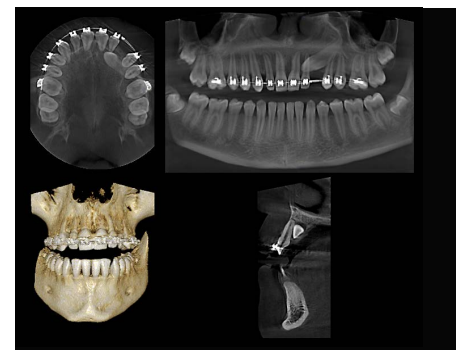
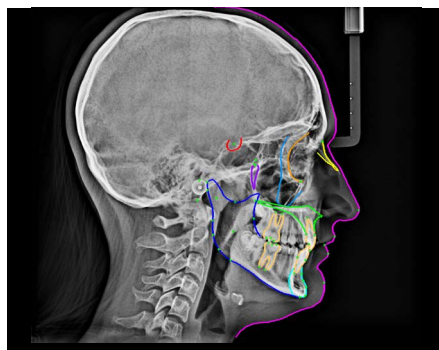
*Go from ceph images to full tracing in just 90 seconds with our exclusive automatic tracing software.\*\**

## SELECTABLE FIELDS OF VIEW

*Select from three cephalometric fields of view and four 3D fields of view to obtain the ideal image for each individual exam, at the lowest dose.*

## INTUITIVE & POWERFUL SOFTWARE

*Our easy-to-use software solutions provide powerful features for a variety of applications, including implants, orthodontics, oral surgeries and endodontics.*



## CS 8100SC 3D

© Carestream Health, Inc. 2016.  
14928 AL CS 8100SC 3D Sell sheet 1216

\*18 x 24 cm lateral image, Fast Scan mode  
\*\*18 x 24 lateral image